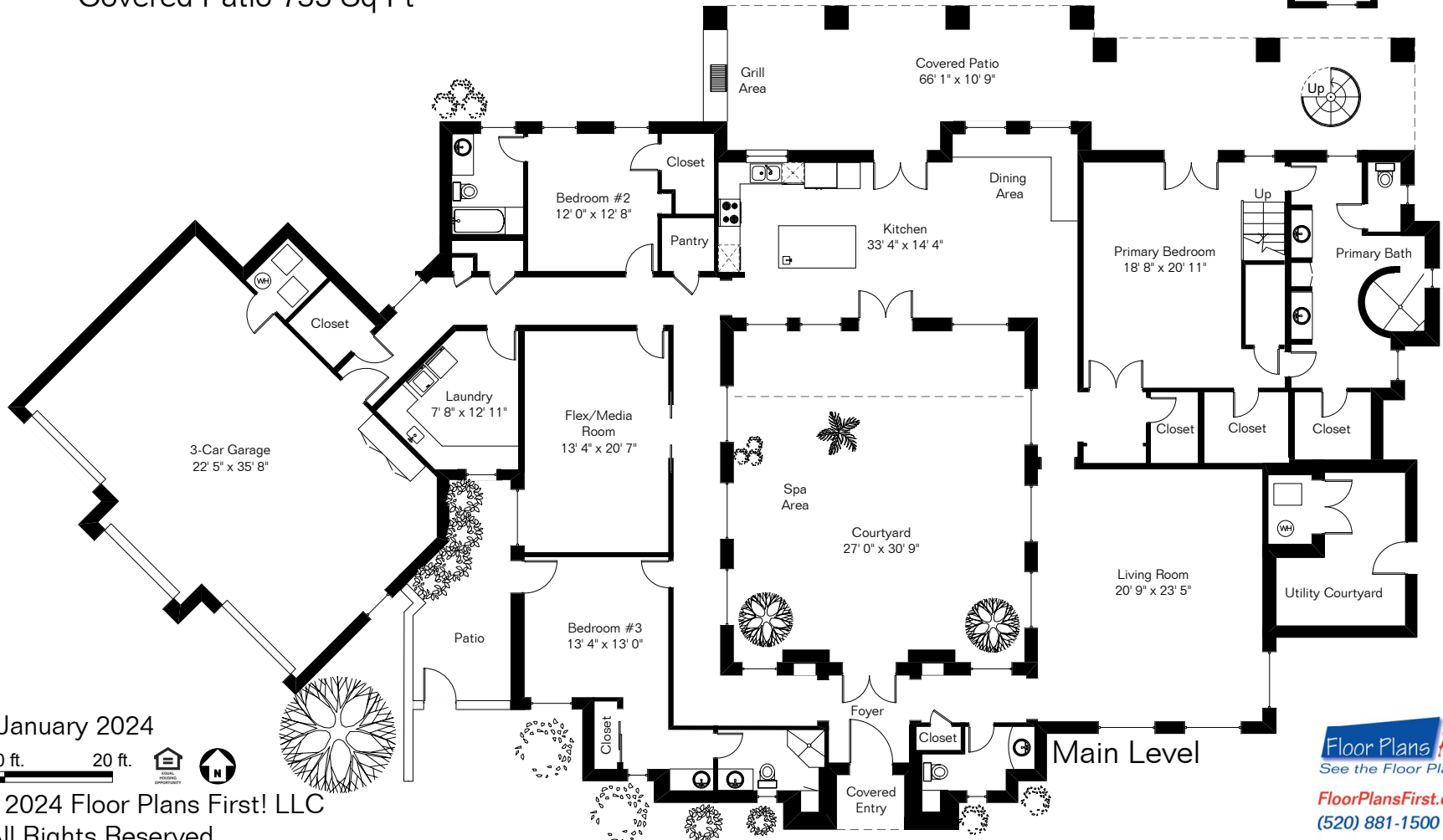
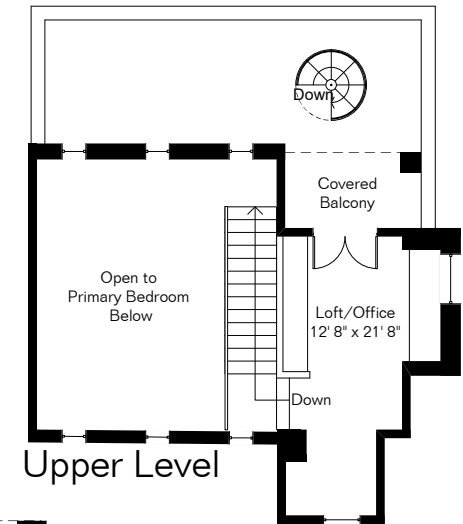


The square footages and room size information are deemed to be reliable but are not guaranteed and should be independently verified. This drawing is for marketing purposes only.

13951 N Old Forest Trail

Presented by Pam Treece
Long Realty Company
(520) 275-2664

Main Level 4,139 Sq Ft
Upper Level 345 Sq Ft
Total Living Area 4,484 Sq Ft
Garage 978 Sq Ft
Courtyard 820 Sq Ft
Covered Patio 753 Sq Ft



Site Visit January 2024



Copyright 2024 Floor Plans First! LLC
All Rights Reserved.

Floor Plans First!
See the Floor Plan First!
FloorPlansFirst.com™
(520) 881-1500